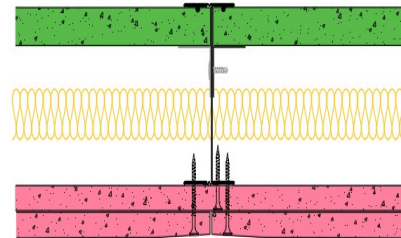


## **SE92-S-61(25) - SPEEDLINE System Data Sheet - Version V1 (24-10-23)**

SPEEDLINE 92mm 'I' Stud Shaft Encasement  
 @600mm Ctrs, with 2x Siniat GTEC 12.5mm Fire  
 Board, Siniat GTEC 19mm Fire CoreBoard, 25mm  
 APR



### **System Performance Breakdown**

Fire Resistance:

BS476 Part 22:1987:

Test Ref & Date or Applied Ref & Report:

Max Height:

Thickness:

Duty Grade: BS 5234: Part 2:1992:

Sound Insulation:

**60/90 FromBothSides** Minutes (Integrity/Insulation).

See note 3 below

**BRE 222202 - BRE Report P102396-1012C**

**Refer to Speedline Specification Clause**

**119 mm.** (At Base Track, Excluding Finishes)

**Severe - Annexes A-F**

**46 R<sub>w</sub>dB**, Date Tested or Assessed Against -

<sup>3</sup>Note: When exposed to fire on the landing side, these systems did not satisfy the insulation performance criteria on the framing members. Therefore, when specifying this system, it must be checked with the relevant approval authority, for the building project that this is acceptable, perhaps on the grounds that there will be no combustible material in close proximity, of the framing sections within the shaft.

TESTED AT ONE OF THE UKAS  
 ACCREDITED LABORATORIES  
 BELOW

B.T.C  
 (H-Ref on Graph)

B.R.E

AIRO

S.R.L

